



SKORIĆ ex. ŠJOR

SPECIJALIZIRANA RASVJETA

PRODAJA-PROJEKTI-MONTAŽA

Adress: Kaštelanska bb, 21000 Split - Croatia

Tel/fax: 021/314-777, 314-778, 314-779

Gms: 091/953-61-72

Web: www.sjor-dekoracije-com

NAUTICAL EQUIPMENT

INDEX

INTERIOR & EXTERIOR LED LIGHTS	3
Accessories	10
UNDERWATER LED LIGHTS	11
Accessories	16
SUPERYACHT UNDERWATER LED LIGHTS	17
Accessories	17
WIRELESS YACHT CONTROL SYSTEMS	19
Accessories	19
GSM ALARM AND REMOTE CONTROL UNITS	20
Accessories	21
SALES TERMS & CONDITIONS	23

This Price List is valid from 1st November, 2011. All previous Price Lists are no longer valid.
All prices are in Euro, ex-works, excluding value added tax (VAT).
The warranty period for all products is 2 (two) years following the invoice date.

Due to continuous product improvement all specifications and design are subject to change without notice.

INTERIOR & EXTERIOR LED LIGHTS

INTENSA MRM0320 Interior & Exterior Light

Compact LED light with built-in electronic driver, microprocessor control, internal dimming control (2 wires, with power-switch) or external dimming control (3 wires, with optional momentary-switch), built-in ASTEL protocol (available Feb. 2012) for complete lighting control (3 wires) by using optional DMX512 interface MXU01 or MXU03, anodized aluminium water resistant casing, spring mount, high-grade polycarbonate glass optical window, advanced optical system with high efficiency lens and holographic diffuser, luminous flux 400 lm at white color temperature 4.500K/3.000 K, 12-24Vdc, max. 420 mA/12Vdc, or max. 230 mA/24Vdc, 3 high-power LEDs, massive aluminium or stainless steel front shapes with different finishes.



I (internal) or E (external) dimming control

CAW (classic front shape, painted white aluminium)

W (warm white lighting) or D (daylight white lighting) or B (blue lighting) or G (green lighting) or R (red lighting)



I (internal) or E (external) dimming control

CAB (classic front shape, painted beige aluminium)

W (warm white lighting) or D (daylight white lighting) or B (blue lighting) or G (green lighting) or R (red lighting)



I (internal) or E (external) dimming control

CSP (classic front shape, polished stainless steel)

W (warm white lighting) or D (daylight white lighting) or B (blue lighting) or G (green lighting) or R (red lighting)



I (internal) or E (external) dimming control

CSG (classic front shape, polished gold (PVD) stainless steel)

W (warm white lighting) or D (daylight white lighting) or B (blue lighting) or G (green lighting) or R (red lighting)



I (internal) or E (external) dimming control

CSS (classic front shape, satin stainless steel)

W (warm white lighting) or D (daylight white lighting) or B (blue lighting) or G (green lighting) or R (red lighting)



I (internal) or E (external) dimming control

MAW (modern front shape, painted white aluminium)

W (warm white lighting) or D (daylight white lighting) or B (blue lighting) or G (green lighting) or R (red lighting)



I (internal) or E (external) dimming control

MAB (modern front shape, painted beige aluminium)

W (warm white lighting) or D (daylight white lighting) or B (blue lighting) or G (green lighting) or R (red lighting)



I (internal) or E (external) dimming control
MSP (modern front shape, polished stainless steel)
 W (warm white lighting) or D (daylight white lighting) or B (blue lighting) or G (green lighting) or R (red lighting)



I (internal) or E (external) dimming control
MSG (modern front shape, polished gold (PVD) stainless steel)
 W (warm white lighting) or D (daylight white lighting) or B (blue lighting) or G (green lighting) or R (red lighting)



I (internal) or E (external) dimming control
MSS (modern front shape, satin stainless steel)
 W (warm white lighting) or D (daylight white lighting) or B (blue lighting) or G (green lighting) or R (red lighting)

INTENSA MRM0115 Interior & Exterior Light

Compact LED light with built-in electronic driver, microprocessor control, internal dimming control (2 wires, with power-switch) or external dimming control (3 wires, with optional momentary-switch), built-in ASTEL protocol (available Feb. 2012) for complete lighting control (3 wires) by using optional DMX512 interface MXU01 or MXU03, anodized aluminium water resistant casing, spring mount, high-grade polycarbonate glass optical window, advanced optical system with reflector and holographic diffuser, luminous flux 270 lm at white color temperature 4.500K/3.000 K, 12-24Vdc, max. 340 mA/12Vdc, or max. 175 mA/24Vdc, 1 high-power LED, massive aluminium or stainless steel front shapes with different finishes.



I (internal) or E (external) dimming control
CAW (classic front shape, painted white aluminium)
 W (warm white lighting) or D (daylight white lighting) or B (blue lighting) or G (green lighting) or R (red lighting)



I (internal) or E (external) dimming control
CAB (classic front shape, painted beige aluminium)
 W (warm white lighting) or D (daylight white lighting) or B (blue lighting) or G (green lighting) or R (red lighting)



I (internal) or E (external) dimming control
CSP (classic front shape, polished stainless steel)
 W (warm white lighting) or D (daylight white lighting) or B (blue lighting) or G (green lighting) or R (red lighting)



I (internal) or E (external) dimming control
CSG (classic front shape, polished gold (PVD) stainless steel)
 W (warm white lighting) or D (daylight white lighting) or B (blue lighting) or G (green lighting) or R (red lighting)



I (internal) or E (external) dimming control
CSS (classic front shape, satin stainless steel)
 W (warm white lighting) or D (daylight white lighting) or B (blue lighting) or G (green lighting) or R (red lighting)

MODEL NO.	DESCRIPTION	UNIT PRICE (EUR)
-----------	-------------	------------------



I (internal) or E (external) dimming control
MAW (modern front shape, painted white aluminium)
W (warm white lighting) or D (daylight white lighting) or B (blue lighting) or G (green lighting) or R (red lighting)



I (internal) or E (external) dimming control
MAB (modern front shape, painted beige aluminium)
+W (warm white lighting) or D (daylight white lighting) or B (blue lighting) or G (green lighting) or R (red lighting)



I (internal) or E (external) dimming control
MSP (modern front shape, polished stainless steel)
W (warm white lighting) or D (daylight white lighting) or B (blue lighting) or G (green lighting) or R (red lighting)



I (internal) or E (external) dimming control
MSG (modern front shape, polished gold (PVD) stainless steel)
W (warm white lighting) or D (daylight white lighting) or B (blue lighting) or G (green lighting) or R (red lighting)



I (internal) or E (external) dimming control
MSS (modern front shape, satin stainless steel)
W (warm white lighting) or D (daylight white lighting) or B (blue lighting) or G (green lighting) or R (red lighting)

INTENSA MRM0620 Interior & Exterior Light

Compact multi-color RGBW LED light with built-in electronic driver, microprocessor-controlled changing of white and all other colors of lighting manually or automatically through the complete rainbow spectrum, adjustable white lighting temperature within 21 steps (up to CRI 97), complete external lighting control (3 wires) by using optional momentary switch, built-in ASTEL protocol (available Feb. 2012) for complete lighting control (3 wires) by using optional DMX512 interface MXU01 or MXU03, anodized aluminium water resistant casing, spring mount, high-grade polycarbonate glass optical window, advanced optical system with reflector and holographic diffuser, luminous flux 350 lm at white color, 12-24Vdc max. 450 mA/12Vdc, or max. 250 mA/24Vdc, 6 high-power LEDs, massive aluminium or stainless steel front shapes with different finishes.



E (external) control
CAW (classic front shape, painted white aluminium)
M (multi-color RGBW lighting)



E (external) control
CAB (classic front shape, painted beige aluminium)
M (multi-color RGBW lighting)



E (external) control
CSP (classic front shape, polished stainless steel)
M (multi-color RGBW lighting)

MODEL NO.	DESCRIPTION	UNIT PRICE (EUR)
-----------	-------------	------------------



E (external) control
CSG (classic front shape, polished gold (PVD) stainless steel)
M (multi-color RGBW lighting)



E (external) control
CSS (classic front shape, satin stainless steel)
M (multi-color RGBW lighting)



E (external) control
MAW (modern front shape, painted white aluminium)
M (multi-color RGBW lighting)



E (external) control
MAB (modern front shape, painted beige aluminium)
M (multi-color RGBW lighting)



E (external) control
MSP (modern front shape, polished stainless steel)
M (multi-color RGBW lighting)



E (external) control
MSG (modern front shape, polished gold (PVD) stainless steel)
M (multi-color RGBW lighting)



E (external) control
MSS (modern front shape, satin stainless steel)
M (multi-color RGBW lighting)

ASTRA MSM0115 Interior & Exterior Light

Compact LED light with built-in electronic driver, microprocessor control, internal dimming control (2 wires, with power-switch) or external dimming control (3 wires, with optional momentary-switch), built-in ASTEL protocol (available Feb. 2012) for complete lighting control (3 wires) by using optional DMX512 interface MXU01 or MXU03, anodized aluminium water resistant casing, surface mount with 3 screws, high-grade polycarbonate glass optical window, advanced optical system with reflector and holographic diffuser, luminous flux 270 lm at white color temperature 4.500K/3.000 K, 12-24Vdc, max. 340 mA/12Vdc, or max. 175 mA/24Vdc, 1 high-power LED, massive aluminium or stainless steel front shapes with different finishes.



I (internal) or E (external) dimming control
AW (painted white aluminium)
W (warm white lighting) or D (daylight white lighting) or B (blue lighting) or G (green lighting) or R (red lighting)

MODEL NO.	DESCRIPTION	UNIT PRICE (EUR)
-----------	-------------	------------------



I (internal) or **E** (external) dimming control
AB (painted beige aluminium)
W (warm white lighting) or **D** (daylight white lighting) or **B** (blue lighting) or **G** (green lighting) or **R** (red lighting)



I (internal) or **E** (external) dimming control
SP (polished stainless steel)
W (warm white lighting) or **D** (daylight white lighting) or **B** (blue lighting) or **G** (green lighting) or **R** (red lighting)



I (internal) or **E** (external) dimming control
SG (polished gold (PVD) stainless steel)
W (warm white lighting) or **D** (daylight white lighting) or **B** (blue lighting) or **G** (green lighting) or **R** (red lighting)



I (internal) or **E** (external) dimming control
SS (satin stainless steel)
W (warm white lighting) or **D** (daylight white lighting) or **B** (blue lighting) or **G** (green lighting) or **R** (red lighting)

ASTRA MSM0320 Interior & Exterior Light

Compact LED light with built-in electronic driver, microprocessor control, internal dimming control (2 wires, with power-switch) or external dimming control (3 wires, with optional momentary-switch), built-in ASTEL protocol (available Feb. 2012) for complete lighting control (3 wires) by using optional DMX512 interface MXU01 or MXU03, anodized aluminium water resistant casing, surface mount with 3 screws, high-grade polycarbonate glass optical window, advanced optical system with reflector and holographic diffuser, luminous flux 350 lm at white color temperature 4.500K/3.000 K, 12-24Vdc, max. 311 mA/12Vdc, or max. 168 mA/24Vdc, 3 high-power LEDs, massive aluminium or stainless steel front shapes with different finishes.



I (internal) or **E** (external) dimming control
AW (painted white aluminium)
W (warm white lighting) or **D** (daylight white lighting) or **B** (blue lighting) or **G** (green lighting) or **R** (red lighting)



I (internal) or **E** (external) dimming control
AB (painted beige aluminium)
W (warm white lighting) or **D** (daylight white lighting) or **B** (blue lighting) or **G** (green lighting) or **R** (red lighting)



I (internal) or **E** (external) dimming control
SP (polished stainless steel)
W (warm white lighting) or **D** (daylight white lighting) or **B** (blue lighting) or **G** (green lighting) or **R** (red lighting)



I (internal) or **E** (external) dimming control
SG (polished gold (PVD) stainless steel)
W (warm white lighting) or **D** (daylight white lighting) or **B** (blue lighting) or **G** (green lighting) or **R** (red lighting)

MODEL NO.	DESCRIPTION	UNIT PRICE (EUR)
-----------	-------------	------------------



I (internal) or **E** (external) dimming control
SS (satin stainless steel)
W (warm white lighting) or **D** (daylight white lighting) or **B** (blue lighting) or **G** (green lighting) or **R** (red lighting)

ASTRA MSM0650 Interior & Exterior Light

Compact LED light with built-in electronic driver, microprocessor control, internal dimming control (2 wires, with power-switch) or external dimming control (3 wires, with optional momentary-switch), built-in ASTEL protocol (available Feb. 2012) for complete lighting control (3 wires) by using optional DMX512 interface MXU01 or MXU03, anodized aluminium water resistant casing, surface mount, with 3 screws, high-grade polycarbonate glass optical window, advanced optical system with reflector and holographic diffuser, luminous flux 680 lm at white color temperature 4.500K/3.000 K, 12-24Vdc, max. 590 mA/12Vdc, or max. 330 mA/24Vdc, 6 high-power LEDs, massive aluminium or stainless steel front shapes with different finishes.



I (internal) or **E** (external) dimming control
AW (painted white aluminium)
W (warm white lighting) or **D** (daylight white lighting) or **B** (blue lighting) or **G** (green lighting) or **R** (red lighting)



I (internal) or **E** (external) dimming control
AB (painted beige aluminium)
W (warm white lighting) or **D** (daylight white lighting) or **B** (blue lighting) or **G** (green lighting) or **R** (red lighting)



I (internal) or **E** (external) dimming control
SP (polished stainless steel)
W (warm white lighting) or **D** (daylight white lighting) or **B** (blue lighting) or **G** (green lighting) or **R** (red lighting)



I (internal) or **E** (external) dimming control
SG (polished gold (PVD) stainless steel)
W (warm white lighting) or **D** (daylight white lighting) or **B** (blue lighting) or **G** (green lighting) or **R** (red lighting)



I (internal) or **E** (external) dimming control
SS (satin stainless steel)
W (warm white lighting) or **D** (daylight white lighting) or **B** (blue lighting) or **G** (green lighting) or **R** (red lighting)

ARCUS MRM01

Interior & Exterior Light

Compact multi-color RGB LED light with built-in electronic driver, microprocessor control, polished stainless steel water resistant casing, high-grade polycarbonate glass optical window with reflector and holographic diffuser, different front shapes and lighting angles, for using as downlight, staircase, step or rail light with changing the color of lighting manually or automatically through the complete rainbow spectrum, complete lighting control by using optional momentary switch or optional DMX512 interface MXU01 or MXU03 by the help of built-in ASTEL protocol (available Feb. 2012), 12-24Vdc, max. 32 mA/12Vdc, or max. 18 mA/24Vdc, 1 high-brightness RGB LED.



SSM

Round slope front shape, straight reflector, multi-color lighting.



QSSM

Square slope front shape, straight reflector, multi-color lighting.



SAM

Round slope front shape, angular reflector, multi-color lighting.



QSAM

Square slope front shape, angular reflector, multi-color lighting.



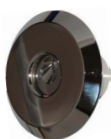
GSM

Round gentle front shape, straight reflector, multi-color lighting.



QGSM

Square gentle front shape, straight reflector, multi-color lighting.



GAM

Round gentle front shape, angular reflector, multi-color lighting.



QGAM

Square gentle front shape, angular reflector, multi-color lighting.



RSM

Rail-mount front shape, straight reflector, multi-color lighting.

Accessories

MSU08

Synchronization Unit

8 outputs, to synchronize the color of lighting of complete group of lights when automatical changing of the color of lighting through the complete rainbow spectrum is selected, for multi-color models Arcus, Intensa and Equator series and three-color 3R models of Conus, Convex and Plaque series, 12-24Vdc.

MXU01

DMX512 Interface

DMX512 to ASTEL protocol multi-light converter with 1 output to control 1 group of lights with ASTEL protocol, single-light non-addressable, high speed mode capability, DIP switch programmable, compatible with RGB(W) and single color lights, 12-24Vdc.

MXU03

DMX512 Interface

DMX512 to ASTEL protocol multi-light converter with 3 outputs to control 3 groups of lights with ASTEL protocol, multi-light addressable, low-speed mode only, DIP switch programmable, compatible with RGB(W) and single color lights, 12-24Vdc.

MRR04WL

Receiver

433,92MHz, 24-bit ID, for wireless remote control of the lights, to turn on and off the lights, to change and program the colors and mode of lighting at the multi-color series of lights, 4 relay outputs, LED indicator, operating temperature 0 - +49 °C, 12-24Vdc

MRC04W

Keyfob Transmitter

ASK modulation, 433,92MHz, 24-bit ID, 4-bit function code, 32-bit rolling code, 4 keys, for wireless remote control of the lights, to turn on and off the lights, to change and program the colors and mode of lighting at the multi-color series of lights, LED indicator, supplied with 12V alkaline battery GP23A with up-to 1 year autonomy.

UNDERWATER LED LIGHTS

EQUATOR MSR0640 Underwater Light

Ultra-thin compact surface-mount design, aluminium bronze (AB2) or stainless steel (316L) casing, 60° angle, high-grade polycarbonate glass optical window, luminous flux 650 lm at white color temperature 6.000-10.000 K, lighting control by using optional momentary switch or optional DMX512 interface MXU01 or MXU03 and PWM dimmer MDU13 with built-in ASTEL protocol (available Feb. 2012), 12-24Vdc, max. 680 mA/12Vdc, or max. 380 mA/24Vdc, 6 high-power LEDs.



AB2W

Aluminium bronze casing, white lighting.

AB2B

Aluminium bronze casing, blue lighting.

AB2G

Aluminium bronze casing, green lighting.

SSPW

Stainless steel casing, white lighting.

SSPB

Stainless steel casing, blue lighting.

SSPG

Stainless steel casing, green lighting.

EQUATOR MSR1280 Underwater Light

Ultra-thin compact surface-mount design, aluminium bronze (AB2) or stainless steel (316L) casing, 60° angle, high-grade polycarbonate glass optical window, luminous flux 1300 lm at white color temperature 6.000-10.000 K, lighting control by using optional momentary switch or optional DMX512 interface MXU01 or MXU03 and PWM dimmer MDU13 with built-in ASTEL protocol (available Feb. 2012), 12-24Vdc, max. 1.4 A/12Vdc, or max. 650 mA/24Vdc, 12 high-power LEDs.



AB2W

Aluminium bronze casing, white lighting.

AB2B

Aluminium bronze casing, blue lighting.

AB2G

Aluminium bronze casing, green lighting.

SSPW

Stainless steel casing, white lighting.

SSPB

Stainless steel casing, blue lighting.

SSPG

Stainless steel casing, green lighting.

EQUATOR MSR36240 Underwater Light

Ultra-thin compact surface-mount design, aluminium bronze (AB2) or stainless steel (316L) casing, 60° angle, high-grade polycarbonate glass optical window, luminous flux 3900 lm at white color temperature 6.000-10.000 K, single-color lighting control by using optional momentary switch or optional DMX512 interface MXU01 or MXU03 and PWM dimmer MDU13 with built-in ASTEL protocol (available Feb. 2012), multi-color RGB version with built-in microprocessor for network connection and simple control of a group of lights with dimming and changing of the color of lighting manually or automatically through the complete rainbow spectrum, complete RGB lighting control by using optional momentary switch or optional DMX512 interface MXU01 or MXU03 by the help of built-in ASTEL protocol (available Feb. 2012), 12-24Vdc, max. 4.3 A/12Vdc, or max. 1.9A/24Vdc, 36 high-power LEDs.



AB2W

Aluminium bronze casing, white lighting.

AB2B

Aluminium bronze casing, blue lighting.

AB2G

Aluminium bronze casing, green lighting.

AB2M

Aluminium bronze casing, multi-color RGB lighting.

SSPW

Stainless steel casing, white lighting.

SSPB

Stainless steel casing, blue lighting.

SSPG

Stainless steel casing, green lighting.

SSPM

Stainless steel casing, multi-color RGB lighting.

CONUS MST0680

Underwater Light

Slope-truncated cone surface-mount design, aluminium bronze (AB2) or anodized aluminium casing, 50° lens angle, 6 mm depth tempered glass optical window, luminous flux 1.300 lm at white color temperature 7.000-10.000 K, lighting control by using optional momentary switch or optional DMX512 interface MXU01 or MXU03 and PWM dimmer MDU13 with built-in ASTEL protocol (available Feb. 2012), 12-24Vdc, 800 mA, 6 high-power LEDs, with power supply unit MPS02800.



AB2W

Aluminium bronze casing, white lighting.

AB2B

Aluminium bronze casing, blue lighting.

AB2G

Aluminium bronze casing, green lighting.

ALNW

Anodized aluminium casing, natural color, white lighting.

ALNB

Anodized aluminium casing, natural color, blue lighting.

ALNG

Anodized aluminium casing, natural color, green lighting.

CONUS MST18240

Underwater Light

Slope-truncated cone surface-mount design, aluminium bronze (AB2) or anodized aluminium casing, 50° lens angle, 6 mm depth tempered glass optical window, luminous flux 3.900 lm at white color temperature 7.000-10.000 K, lighting control by using optional momentary switch or optional DMX512 interface MXU01 or MXU03 and PWM dimmer MDU13 with built-in ASTEL protocol (available Feb. 2012), 12-24Vdc, 3x800 mA, 18 high-power LEDs, with power supply unit MPS06800.



AB2W

Aluminium bronze casing, white lighting.

AB2B

Aluminium bronze casing, blue lighting.

AB2G

Aluminium bronze casing, green lighting.

AB23W

Aluminium bronze casing, three-color white, blue and green lighting.

AB23R

Aluminium bronze casing, three-color blue, green and red lighting.

ALNW

Anodized aluminium casing, natural, white lighting.

ALNB

Anodized aluminium casing, natural, blue lighting.

ALNG

Anodized aluminium casing, natural, green lighting.

ALN3W

Anodized aluminium casing, natural, three-color white, blue and green lighting.

ALN3R

Anodized aluminium casing, natural, three-color blue, green and red lighting.

CONUS MSR0680

Underwater Light

Slope-truncated cone surface-mount design, aluminium bronze (AB2) or anodized aluminium casing, 50° lens angle, 6 mm depth tempered glass optical window, luminous flux 1.300 lm at white color temperature 7.000-10.000 K, lighting control by using optional momentary switch or optional DMX512 interface MXU01 or MXU03 and PWM dimmer MDU13 with built-in ASTEL protocol (available Feb. 2012), 12-24Vdc, 800 mA, 6 high-power LEDs, with power supply unit MPS02800.



AB2W

Aluminium bronze casing, white lighting.

AB2B

Aluminium bronze casing, blue lighting.

AB2G

Aluminium bronze casing, green lighting.

ALNW

Anodized aluminium casing, natural color, white lighting.

ALNB

Anodized aluminium casing, natural color, blue lighting.

ALNG

Anodized aluminium casing, natural color, green lighting.

CONUS MSR18240 Underwater Light



Slope-truncated cone surface-mount design, aluminium bronze (AB2) or anodized aluminium casing, 50° lens angle, 6 mm depth tempered glass optical window, luminous flux 3.900 lm at white color temperature 7.000-10.000 K, lighting control by using optional momentary switch or optional DMX512 interface MXU01 or MXU03 and PWM dimmer MDU13 with built-in ASTEL protocol (available Feb. 2012), 12-24Vdc, 3x800 mA, 18 high-power LEDs, with power supply unit MPS06800.

AB2W

Aluminium bronze casing, white lighting.

AB2B

Aluminium bronze casing, blue lighting.

AB2G

Aluminium bronze casing, green lighting.

AB23W

Aluminium bronze casing, three-color white, blue and green lighting.

AB23R

Aluminium bronze casing, three-color blue, green and red lighting.

ALNW

Anodized aluminium casing, natural color, white lighting.

ALNB

Anodized aluminium casing, natural color, blue lighting.

ALNG

Anodized aluminium casing, natural color, green lighting.

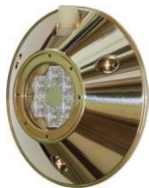
ALN3W

Anodized aluminium casing, natural, three-color white, blue and green lighting.

ALN3R

Anodized aluminium casing, natural, three-color blue, green and red lighting.

CONVEX MST0680 Underwater Light



Truncated cone surface-mount design, aluminium bronze (AB2) or anodized aluminium casing, 50° lens angle, 6 mm depth tempered glass optical window, luminous flux 1.300 lm at white color temperature 7.000-10.000 K, lighting control by using optional momentary switch or optional DMX512 interface MXU01 or MXU03 and PWM dimmer MDU13 with built-in ASTEL protocol (available Feb. 2012), 12-24Vdc, 800 mA, 6 high-power LEDs, with power supply unit MPS02800.

AB2W

Aluminium bronze casing, white lighting.

AB2B

Aluminium bronze casing, blue lighting.

AB2G

Aluminium bronze casing, green lighting.

ALNW

Anodized aluminium casing, natural color, white lighting.

ALNB

Anodized aluminium casing, natural color, blue lighting.

ALNG

Anodized aluminium casing, natural color, green lighting.

CONVEX MST18240 Underwater Light



Truncated cone surface-mount design, aluminium bronze (AB2) or anodized aluminium casing, 50° lens angle, 6 mm depth tempered glass optical window, luminous flux 3.900 lm at white color temperature 7.000-10.000 K, lighting control by using optional momentary switch or optional DMX512 interface MXU01 or MXU03 and PWM dimmer MDU13 with built-in ASTEL protocol (available Feb. 2012), 12-24Vdc, 3x800 mA, 18 high-power LEDs, with power supply unit MPS06800.

AB2W

Aluminium bronze casing, white lighting.

AB2B

Aluminium bronze casing, blue lighting.

AB2G

Aluminium bronze casing, green lighting.

AB23W

Aluminium bronze casing, three-color white, blue and green lighting.

AB23R

Aluminium bronze casing, three-color blue, green and red lighting.

MODEL NO.	DESCRIPTION	UNIT PRICE (EUR)
-----------	-------------	------------------

ALNW

Anodized aluminium casing, natural color, white lighting.

ALNB

Anodized aluminium casing, natural color, blue lighting.

ALNG

Anodized aluminium casing, natural color, green lighting.

ALN3W

Anodized aluminium casing, natural, three-color white, blue and green lighting.

ALN3R

Anodized aluminium casing, natural, three-color blue, green and red lighting.

CONVEX MSR0680 Underwater Light



Truncated cone surface-mount design, aluminium bronze (AB2) or anodized aluminium casing, 50° lens angle, 6 mm depth tempered glass optical window, luminous flux 1.300 lm at white color temperature 7.000-10.000 K, lighting control by using optional momentary switch or optional DMX512 interface MXU01 or MXU03 and PWM dimmer MDU13 with built-in ASTEL protocol (available Feb. 2012), 12-24Vdc, 800 mA, 6 high-power LEDs, with power supply unit MPS02800.

AB2W

Aluminium bronze casing, white lighting.

AB2B

Aluminium bronze casing, blue lighting.

AB2G

Aluminium bronze casing, green lighting.

ALNW

Anodized aluminium casing, natural color, white lighting.

ALNB

Anodized aluminium casing, natural color, blue lighting.

ALNG

Anodized aluminium casing, natural color, green lighting.

CONVEX MSR18240 Underwater Light



Truncated cone surface-mount design, aluminium bronze (AB2) or anodized aluminium casing, 50° lens angle, 6 mm depth tempered glass optical window, luminous flux 3.900 lm at white color temperature 7.000-10.000 K, lighting control by using optional momentary switch or optional DMX512 interface MXU01 or MXU03 and PWM dimmer MDU13 with built-in ASTEL protocol (available Feb. 2012), 12-24Vdc, 3x800 mA, 18 high-power LEDs, with power supply unit MPS06800.

AB2W

Aluminium bronze casing, white lighting.

AB2B

Aluminium bronze casing, blue lighting.

AB2G

Aluminium bronze casing, green lighting.

AB23W

Aluminium bronze casing, three-color white, blue and green lighting.

AB23R

Aluminium bronze casing, three-color blue, green and red lighting.

ALNW

Anodized aluminium casing, natural color, white lighting.

ALNB

Anodized aluminium casing, natural color, blue lighting.

ALNG

Anodized aluminium casing, natural color, green lighting.

ALN3W

Anodized aluminium casing, natural, three-color white, blue and green lighting.

ALN3R

Anodized aluminium casing, natural, three-color blue, green and red lighting.

CONVEX MTH0680 Underwater Light



Truncated cone thru-hull design, aluminium bronze (AB2) casing, 50° lens angle, 6 mm depth tempered glass optical window, luminous flux 1.300 lm at white color temperature 7.000-10.000 K, lighting control by using optional momentary switch or optional DMX512 interface MXU01 or MXU03 and PWM dimmer MDU13 with built-in ASTEL protocol (available Feb. 2012), 12-24Vdc, 800 mA, 6 high-power LEDs, with power supply unit MPS02800.

AB2W

White lighting.

AB2B

Blue lighting.

AB2G

Green lighting.

CONVEX MTH18240 Underwater Light



Truncated cone thru-hull design, aluminium bronze (AB2) casing, 50° lens angle, 6 mm depth tempered glass optical window, luminous flux 3.900 lm at white color temperature 7.000-10.000 K, lighting control by using optional momentary switch or optional DMX512 interface MXU01 or MXU03 and PWM dimmer MDU13 with built-in ASTEL protocol (available Feb. 2012), 12-24Vdc, 3x800 mA, 18 high-power LEDs, with power supply unit MPS06800.

AB2W

White lighting.

AB2B

Blue lighting.

AB2G

Green lighting.

AB23W

Aluminium bronze casing, three-color white, blue and green lighting.

AB23R

Aluminium bronze casing, three-color blue, green and red lighting.

PLAQUE MFM0680 Underwater Light



Flush-mount design, aluminium bronze (AB2) casing, 50° lens angle, 6 mm depth tempered glass optical window, luminous flux 1.300 lm at white color temperature 7.000-10.000 K, lighting control by using optional momentary switch or optional DMX512 interface MXU01 or MXU03 and PWM dimmer MDU13 with built-in ASTEL protocol (available Feb. 2012), 12-24Vdc, 800 mA, 6 high-power LEDs, with power supply unit MPS02800.

AB2W

White lighting.

AB2B

Blue lighting.

AB2G

Green lighting.

PLAQUE MFM18240 Underwater Light



Flush-mount design, aluminium bronze (AB2) casing, 50° lens angle, 6 mm depth tempered glass optical window, luminous flux 3.900 lm at white color temperature 7.000-10.000 K, lighting control by using optional momentary switch or optional DMX512 interface MXU01 or MXU03 and PWM dimmer MDU13 with built-in ASTEL protocol (available Feb. 2012), 12-24Vdc, 3x800 mA, 18 high-power LEDs, with power supply unit MPS06800.

AB2W

White lighting.

AB2B

Blue lighting.

AB2G

Green lighting.

AB23W

Aluminium bronze casing, three-color white, blue and green lighting.

AB23R

Aluminium bronze casing, three-color blue, green and red lighting.

Accessories

MSU08

Synchronization Unit

8 outputs, to synchronize the color of lighting of complete group of lights when automatical changing of the color of lighting through the complete rainbow spectrum is selected, for multi-color models Arcus, Intensa and Equator series and three-color 3R models of Conus, Convex and Plaque series, 12-24Vdc.

MDU13

PWM Dimmer

3 control outputs, for using with single color Equator series and with single or three-color of Conus, Convex and Plaque series of underwater LED lights. The 3 control outputs enable the dimming of different series of underwater LED lights by using one momentary-switch, built-in ASTEL protocol (available Feb. 2012), 12-24Vdc.

MXU01

DMX512 Interface

DMX512 to ASTEL protocol multi-light converter with 1 output to control 1 group of lights with ASTEL protocol, single-light non-addressable, high speed mode capability, DIP switch programmable, compatible with RGB(W) and single color lights, 12-24Vdc.

MXU03

DMX512 Interface

DMX512 to ASTEL protocol multi-light converter with 3 outputs to control 3 groups of lights with ASTEL protocol, multi-light addressable, low-speed mode only, DIP switch programmable, compatible with RGB(W) and single color lights, 12-24Vdc.

MRR04WL

Receiver

433,92MHz, 24-bit ID, for wireless remote control of the lights, to turn on and off the lights, to change and program the colors and mode of lighting at the multi-color series of lights, 4 relay outputs, LED indicator, operating temperature 0 - +49 °C, 12-24Vdc

MRC04W

Keyfob Transmitter

ASK modulation, 433,92MHz, 24-bit ID, 4-bit function code, 32-bit rolling code, 4 keys, for wireless remote control of the lights, to turn on and off the lights, to change and program the colors and mode of lighting at the multi-color series of lights, LED indicator, supplied with 12V alkaline battery GP23A with up-to 1 year autonomy.

TEF-GEL

Corrosion Eliminator

Waterproof paste, for galvanic protection of screws for underwater lights installation, 10g syringe.

MS50

Sealant

2-component sealant and adhesive, for underwater lights installation, 150ml syringe, with 5 mixing nozzles.

IB01

Isolation Board

To protect the underwater lights against galvanic corrosion when the underwater lights are installed on the steel or aluminium hull, thickness 1 mm, polycarbonate.

EQ06

For Equator MSR0640 series.

EQ12

For Equator MSR1280 series.

EQ36

For Equator MSR36240 series.

CU06

For Conus MST0680 and Conus MSR0680 series.

CU18

For Conus MST18240 and Conus MSR18240 series.

CX06

For Convex MST0680, Convex MSR0680 and Convex MTH0680 series.

CX18

For Convex MST18240, Convex MSR18240 and Convex MTH18240 series.

PQ06

For PLAQUE MFM0680 series.

PQ18

For PLAQUE MFM18240 series.

SUPERYACHT UNDERWATER LED LIGHTS

EQUATOR MSR36240S Underwater Light



Ultra-thin compact surface-mount design for optional cofferdam installation, stainless steel (316L) casing, 60° angle reflector, high-grade polycarbonate glass optical window, luminous flux 7.000 lm at white color temperature 6.000-10.000 K, lighting control by using optional momentary switch or optional DMX512 interface MXU01 or MXU03 and PWM dimmer MDU13 with built-in ASTEL protocol (available Feb. 2012), 24Vdc, max. 4.2A, 36 high-power LEDs.

- W
White lighting.
- B
Blue lighting.
- G
Green lighting.

CONVEX MTH18240S Underwater Light



Cylinder thru-hull design, stainless steel (316L) casing, 50° lens angle, 6 mm depth tempered glass optical window, luminous flux 3.900 lm at white color temperature 7.000-10.000 K, lighting control by using optional momentary switch or optional DMX512 interface MXU01 or MXU03 and PWM dimmer MDU13 with built-in ASTEL protocol (available Feb. 2012), 12-24Vdc, 3x800 mA, 18 high-power LEDs, with power supply unit MPS06800.

- W
White lighting.
- B
Blue lighting.
- G
Green lighting.
- 3W
Three-color white, blue and green lighting.
- 3R
Three-color blue, green and red lighting.

Accessories

MSU08

Synchronization Unit

8 outputs, to synchronize the color of lighting of complete group of lights when automatical changing of the color of lighting through the complete rainbow spectrum is selected, for multi-color models Arcus, Intensa and Equator series and three-color 3R models of Conus, Convex and Plaque series, 12-24Vdc.

MDU13

PWM Dimmer

3 control outputs, for using with single color Equator series and with single or three-color of Conus, Convex and Plaque series of underwater LED lights. The 3 control outputs enable the dimming of different series of underwater LED lights by using one momentary-switch, built-in ASTEL protocol (available Feb. 2012), 12-24Vdc.

MXU01

DMX512 Interface

DMX512 to ASTEL protocol multi-light converter with 1 output to control 1 group of lights with ASTEL protocol, single-light non-addressable, high speed mode capability, DIP switch programmable, compatible with RGB(W) and single color lights, 12-24Vdc.

MXU03

DMX512 Interface

DMX512 to ASTEL protocol multi-light converter with 3 outputs to control 3 groups of lights with ASTEL protocol, multi-light addressable, low-speed mode only, DIP switch programmable, compatible with RGB(W) and single color lights, 12-24Vdc.

MRR04WL

Receiver

433,92MHz, 24-bit ID, for wireless remote control of the lights, to turn on and off the lights, to change and program the colors and mode of lighting at the multi-color series of lights, 4 relay outputs, LED indicator, operating temperature 0 - +49 C, 12-24Vdc

MRC04W

Keyfob Transmitter

ASK modulation, 433,92MHz, 24-bit ID, 4-bit function code, 32-bit rolling code, 4 keys, for wireless remote control of the lights, to turn on and off the lights, to change and program the colors and mode of lighting at the multi-color series of lights, LED indicator, supplied with 12V alkaline battery GP23A with up-to 1 year autonomy.

MODEL NO.	DESCRIPTION	UNIT PRICE (EUR)
CD01	Cofferdam Enables reliable installation and maintenance, made of material as specially requested. EQ36S For Equator 36240S series. CX18S For Convex MTH18240S series.	

WIRELESS YACHT CONTROL SYSTEMS

MYW868B/CP



Wireless Yacht Control System

MYW868B/CP-3

3-channel control system, starboard/port engine control, anchor windlass control, transmit LED indicator, low battery LED indicator, ABS casings with IP65 / IP41 protection, low power consumption, simple connecting.

MYW868B/CP-4

4-channel control system, starboard/port engine control, anchor windlass control, bowthruster control, transmit LED indicator, low battery LED indicator, ABS casings with IP65 / IP41 protection, low power consumption, simple connecting.

MYW868B/CP-5

5-channel control system, starboard/port engine control, anchor windlass control, bowthruster and sternthruster control, transmit LED indicator, low battery LED indicator, ABS casing with IP65 / IP41 protection, low power consumption, simple connecting.

Accessories

MYW868CP



Remote Controller

MYW868CP-3

3-channel, port/starboard engine control, anchor windlass control, transmit LED indicator, low battery LED indicator, ABS casing with IP41 protection, low power consumption.

MYW868CP-4

4-channel, port/starboard engine control, anchor windlass and bow thruster control, transmit LED indicator, low battery LED indicator, ABS casing with IP41 protection, low power consumption.

MYW868CP-5

5-channel, port/starboard engine control, anchor windlass, bow thruster and stern thruster control, transmit LED indicator, low battery LED indicator, ABS casing with IP41 protection, low power consumption.

MYW868B



Basic Control Unit

MYW868B-3

3-channel, starboard/port engine control, anchor windlass control, control LED indicators, ABS casing with IP65 protection, simple connecting.

MYW868B-4

4-channel, starboard/port engine control, anchor windlass control, bow thruster control, control LED indicators, ABS casing with IP65 protection, simple connecting.

MYW868B-5

5-channel, starboard/port engine control, anchor windlass control, bow thruster and stern thruster control, control LED indicators, ABS casing with IP65 protection, simple connecting.

MYW868BE

Additional Control Unit

to connect the system to the special electronic control heads or to connect to the second electronic control head, 2-channel, starboard/port engine control or control of other devices, LED indicators, ABS casing with IP65 protection, connection cable enclosed.

GSM ALARM AND REMOTE CONTROL UNITS

MODEL	DIGITAL INPUTS	ANALOG INPUTS	DIGITAL OUTPUTS	RELAY OUTPUTS	TEMPERATURE SENSORS INTERFACE	KEYBOARD INTERFACE	RS-232/RS-485 INTERFACE	I2C INTERFACE	AUDIO INTERFACE	SMS CONTROL, ALARMING AND PROGRAMMING	ALARMING WITH CALLING	DTMF CONTROL AND MANAGEMENT	IVR - INTERACTIVE VOICE RESPONDER	IP-65 CASING PROTECTION	GPS TRACKING AND ALARMING	WIRELESS SENSORS POSSIBILITY	KEYFOB TRANSMITTER MANAGEMENT
MGR 100 Basic	8	-	-	-	-	(Yes)	-	-	-	Yes	(Yes)	-	-	Yes	-	-	-
MGR 100 Advance	8	4(6)	4	4	3	(Yes)	-	-	-	Yes	(Yes)	Yes	-	Yes	-	-	-
MGR 100 Reference	8	4(6)	4	4	3	Yes	Yes	Yes	Yes	Yes	Yes	Yes	Yes	Yes	-	-	-
MGR 100G Basic	8	-	-	-	-	(Yes)	-	-	-	Yes	(Yes)	-	-	Yes	Yes	-	-
MGR 100G Advance	8	4(6)	4	4	3	(Yes)	-	-	-	Yes	(Yes)	Yes	-	Yes	Yes	-	-
MGR 100G Reference	8	4(6)	4	4	3	Yes	Yes	Yes	Yes	Yes	Yes	Yes	Yes	Yes	Yes	-	-
MGR 100W Basic	8	-	-	-	-	(Yes)	-	-	-	Yes	(Yes)	-	-	Yes	-	Yes	Yes
MGR 100W Advance	8	4(6)	4	4	3	(Yes)	-	-	-	Yes	(Yes)	Yes	-	Yes	-	Yes	Yes
MGR 100W Reference	8	4(6)	4	4	3	Yes	Yes	Yes	Yes	Yes	Yes	Yes	Yes	Yes	-	Yes	Yes
MGR 100GW Basic	8	-	-	-	-	(Yes)	-	-	-	Yes	(Yes)	-	-	Yes	Yes	Yes	Yes
MGR 100GW Advance	8	4(6)	4	4	3	(Yes)	-	-	-	Yes	(Yes)	Yes	-	Yes	Yes	Yes	Yes
MGR 100GW Reference	8	4(6)	4	4	3	Yes	Yes	Yes	Yes	Yes	Yes	Yes	Yes	Yes	Yes	Yes	Yes

MGR100

GSM Remote Control Unit

Basic

12-30Vdc, 8 digital inputs, SMS alarming and programming, quad-band GSM module with SIM card holder, SMA antenna connector, accumulator connector, ABS casing with IP-65 protection.

Advance

12-30Vdc, 8 digital inputs, 4 digital outputs, 4 relay outputs, 4(6) analog inputs, interface to connect 3 temperature sensors, SMS alarming and programming, DTMF control, quad-band GSM module with SIM card holder, SMA antenna connector, accumulator connector, ABS casing with IP-65 protection.

Reference

12-30Vdc, 8 digital inputs, 4 digital outputs, 4 relay outputs, 4(6) analog inputs, interface to connect 3 temperature sensors, keyboard input, SMS alarming and programming, DTMF control, alarming with calling, interactive voice responder, audio interface, RS232/RS485 serial interface, quad-band GSM module with SIM card holder, SMA antenna connector, accumulator connector, ABS casing with IP-65 protection.

MGR100G

GSM Remote Control Unit

Basic

12-30Vdc, 8 digital inputs, SMS alarming and programming, quad-band GSM module with SIM card holder, SMA antenna connector, accumulator connector, 12-channel parallel GPS receiver with SMA antenna connector and GPS antenna power supply of 3.3Vdc, ABS casing with IP-65 protection.

Advance

12-30Vdc, 8 digital inputs, 4 digital outputs, 4 relay outputs, 4(6) analog inputs, interface to connect 3 temperature sensors, SMS alarming and programming, DTMF control, quad-band GSM module with SIM card holder, SMA antenna connector, accumulator connector, 12-channel parallel GPS receiver with SMA antenna connector and GPS antenna power supply of 3.3Vdc, ABS casing with IP-65 protection.

Reference

12-30Vdc, 8 digital inputs, 4 digital outputs, 4 relay outputs, 4(6) analog inputs, interface to connect 3 temperature sensors keyboard input, SMS alarming and programming, DTMF control, alarming with calling, interactive voice responder, audio interface, RS232/RS485 serial interface, quad-band GSM module with SIM card holder, SMA antenna connector, accumulator connector, 12-channel parallel GPS receiver with SMA antenna connector and GPS antenna power supply of 3.3Vdc, ABS casing with IP-65 protection.

MGR100W

GSM Remote Control Unit

Basic

12-30Vdc, built-in receiver for using up-to 8 wireless sensors and wireless keyfob transmitter, 8 digital inputs, SMS alarming and programming, quad-band GSM module with SIM card holder, SMA antenna connector, accumulator connector, ABS casing with IP-65 protection.

Advance

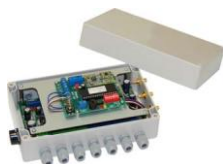
12-30Vdc, built-in receiver for using up-to 8 wireless sensors and wireless keyfob transmitter, 8 digital inputs, 4 digital outputs, 4 relay outputs, 4(6) analog inputs, interface to connect 3 temperature sensors, SMS alarming and programming, DTMF control, quad-band GSM module with SIM card holder, SMA antenna connector, accumulator connector, ABS casing with IP-65 protection.

MODEL NO.	DESCRIPTION	UNIT PRICE (EUR)
-----------	-------------	------------------

Reference

12-30Vdc, built-in receiver for using up-to 8 wireless sensors and wireless keyfob transmitter, 8 digital inputs, 4 digital outputs, 4 relay outputs, 4(6) analog inputs, interface to connect 3 temperature sensors, keyboard input, SMS alarming and programming, DTMF control, alarming with calling, interactive voice responder, audio interface, RS232/RS485 serial interface, quad-band GSM module with SIM card holder, SMA antenna connector, accumulator connector, ABS casing with IP-65 protection.

MGR100GW



GSM Remote Control Unit

Basic

12-30Vdc, built-in receiver for using up-to 8 wireless sensors and wireless keyfob transmitter, 8 digital inputs, SMS alarming and programming, quad-band GSM module with SIM card holder, SMA antenna connector, accumulator connector, 12-channel parallel GPS receiver with SMA antenna connector and GPS antenna power supply of 3.3Vdc, ABS casing with IP-65 protection.

Advance

12-30Vdc, built-in receiver for using up-to 8 wireless sensors and wireless keyfob transmitter, 8 digital inputs, 4 digital outputs, 4 relay outputs, 4(6) analog inputs, interface to connect 3 temperature sensors, SMS alarming and programming, DTMF control, quad-band GSM module with SIM card holder, SMA antenna connector, accumulator connector, 12-channel parallel GPS receiver with SMA antenna connector and GPS antenna power supply of 3.3Vdc, ABS casing with IP-65 protection.

Reference

12-30Vdc, built-in receiver for using up-to 8 wireless sensors and wireless keyfob transmitter, 8 digital inputs, 4 digital outputs, 4 relay outputs, 4(6) analog inputs, interface to connect 3 temperature sensors, keyboard input, SMS alarming and programming, DTMF control, alarming with calling, interactive voice responder, audio interface, RS232/RS485 serial interface, quad-band GSM module with SIM card holder, SMA antenna connector, accumulator connector, 12-channel parallel GPS receiver with SMA antenna connector and GPS antenna power supply of 3.3Vdc, ABS casing with IP-65 protection.

Accessories

MT01

Temperature Sensor

Temperature from -25 °C to +80 °C (0.33 °C at 30 °C), with 5m cable.

MT02

Temperature Sensor

Temperature from -25 °C to +80 °C (1 °C at 30 °C), with 5m cable.

MIR01

IR Intruder Sensor

9-14.5 Vdc, indoor, cover area 7.6 x 7.6m at height of 2.4m, 360°, 30 areas, temperature compensation, LED indicator.

MIR02

IR Intruder Sensor

12 Vdc, outdoor, cover area 12 x 15m, day and night mode, -20 - +50 °C, temperature compensation, LED indicator.

MIR03W

IR Intruder Sensor

Wireless, 433,92MHz, 24-bit ID, pet immunity for up-to 38 kgs, cover area 12 x 12m, LED indicator, operating temperature -10 - +50 °C, RFI protection 20V/m up to 1000MHz, supplied with 3V lithium battery CR-123 with up-to 3 years autonomy.

MF01

Smoke Sensor

12-24 Vdc, LED indicator.

MF02W

Smoke Sensor

Wireless, 433,92MHz, 24-bit ID, LED indicator, operating temperature 0 - +38 °C, supplied with 9V alkaline or lithium battery with up-to 2 years autonomy.

MW01

Water Inlet Sensor

Floating switch.

MM02

Magnetic Switch

Magnetic contacts.

MM03W

Magnetic Switch

Wireless, 433,92MHz, 24-bit ID, LED indicator, operating temperature 0 - +49 °C, supplied with 3.6V lithium battery 3 AA with up-to 3 years autonomy.

MAGM01

GSM antenna

Stubby, frequency range GSM 850/900/1800/1900MHz, gain 2..5dB, with SMA connector.

MODEL NO.	DESCRIPTION	UNIT PRICE (EUR)
MAGM03	GSM antenna Frequency range GSM 850/900/1800/1900MHz, 433MHz, UMTS, WLAN, gain 0dB, with 3m cable and SMA connector.	
MAGM04	GSM antenna Stubby, right angle, frequency range GSM 850/900/1800/1900MHz, gain 1,5dB, with SMA connector.	
MAGP02	GPS antenna 3-5Vdc, center frequency 1575,42MHz, with 5m cable and SMA connector.	
MARF01	RF antenna Stubby, right angle UHF flexible antenna, gain 0dB, with SMA connector.	
MKB 120	Keyboard 12-24Vac/dc, 99 user codes, 30 sec. lockout after 8 invalid codes, max. current consumption 130mA, EEPROM to prevent data loss during power failure.	
MAC12	Accumulator 12V/7.2Ah.	
MRT04W	Transmitter 2-channel, 433,92MHz, 24-bit ID, LED indicator, supplied with 3V lithium battery CR-2 with up-to 3 years autonomy, for wireless connection of standard sensors.	
MRR04W	Receiver 10.5-16Vdc, 433,92MHz, 24-bit ID, 4 zones for using up to 16 wireless sensors, 4 status outputs, LED indicator, operating temperature 0 - +49 °C.	
MRC04W	Keyfob Transmitter ASK modulation, 433,92MHz, 24-bit ID, 4-bit function code, 32-bit rolling code, 4 keys, LED indicator, supplied with 12V alkaline battery GP23A with up-to 1 year autonomy.	

Sales Terms & Conditions

1. Interpretation

1.1 In these Conditions 'EQUIPMENT' means the goods which the Seller is to supply in accordance with these Conditions; 'SELLER' means ASTEL d.o.o.; 'CONDITIONS' means the standard terms and conditions of sale set out in this document and (unless the context otherwise requires) includes any special terms and conditions agreed in Writing between the Buyer and the Seller; 'CONTRACT' means the contract for the purchase and sale of the Equipment; 'WRITING' includes e-mail, facsimile transmission and comparable means of communication.

2. Basis of the Sale

2.1 The Seller shall sell and the Buyer shall purchase the Equipment in accordance with any written quotation of the Seller which is accepted by the Buyer, or any written order of the Buyer which is accepted by the Seller, subject in either case to these Conditions, which shall govern the Contract to the exclusion of any other terms and conditions.

2.2 Any variations to these conditions are invalid unless confirmed by the Seller in Writing.

2.3 Any advice or recommendation given by the Seller to the Buyer as to the storage, application or use of the Equipment which is not confirmed in Writing by the Seller is followed or acted upon entirely at the Buyer's own risk.

2.4 Any error or omission in any information or document issued by the Seller shall be subject to correction without any liability on the part of the Seller.

3. Orders or Specifications

3.1 No order submitted by the Buyer shall be deemed to be accepted by the Seller unless and until confirmed in Writing by the Seller's authorised representative.

3.2 The Buyer shall be responsible to the Seller (or ensuring the accuracy of the terms of any order (including any applicable specification) submitted by the Buyer, and for giving the Seller any necessary information relating to the Equipment within a sufficient time to enable the Seller to perform the Contract in accordance with its terms.

3.3 The Seller reserves the right to make any changes in the specification of the Equipment which do not materially affect its quality or performance.

4. Price of the Goods

4.1 All prices of the Equipment are quoted in Euro, including packaging.

4.2 The Seller reserves the right, by giving notice to the Buyer at any time before delivery, to increase the price of the Equipment provided that the Buyer may give notice within 48 hours of the Seller's notice cancelling the order in which event neither party shall be under any further obligation to the other except insofar as it has already accrued.

4.3 All prices are given by the Seller on an ex-works basis, and where the Seller agrees to deliver the Equipment otherwise than at the Seller's premises, the Buyer shall be liable to pay the Seller's charges for transport and insurance.

4.4 The price is exclusive of any applicable value added tax (VAT), which the Buyer shall be additionally liable to pay to the Seller.

5. Terms of Payment

5.1 Goods supplied shall be payable within 30 days following the invoice date. The date of payment shall be the date when the money is received by the Seller or credited to the Seller's account. The right to assert any further claims for damages in case of default in payment shall remain unaffected.

5.2 If the Buyer fails to make any payment on the due date then without prejudice to any other right or remedy available to the Seller, the Seller shall be entitled to cancel the contract or suspend any further deliveries to the Buyer.

6. Delivery

6.1 Any dates quoted for delivery of the Equipment is approximate only and the Seller shall not be liable for any delay in delivery of the Equipment however caused. Time for delivery shall not be of the essence of the contract unless previously agreed by the Seller in writing. The Equipment may be delivered by the Seller in advance of the quoted delivery date upon giving reasonable notice to the Buyer.

6.2 If the Buyer fails to take delivery of the Equipment or fails to give the Seller adequate delivery instructions at the time stated for delivery or fails to make any payment due prior to delivery then, without prejudice to any other right or remedy available to the Seller, the Seller may store the Equipment until actual delivery and charge the Buyer for the reasonable costs (including insurance) of storage.

7. Risk and Property

7.1 Risk of damage to or loss of the Equipment shall pass to the Buyer at the time of delivery or if the buyer wrongfully fails to take delivery of the Equipment, the time when the Seller tendered delivery of the Equipment.

7.2 Notwithstanding delivery and the passing of risk in the Equipment, or any other provision of these Conditions, the property in the Equipment shall not pass to the Buyer until the Seller has received payment in full of the price of the Equipment and all other goods agreed to be sold by the Seller to the Buyer for which payment is then due.

7.3 Until such time as the property in the Equipment passes to the Buyer, the Buyer shall hold The Equipment as the Seller's fiduciary agent and bailee, and shall keep the Equipment separate from those of the Buyer and third parties and the property stored, protected and insured and identified as the Seller's property, but shall be entitled to resell or use the Equipment in the ordinary course of its business.

7.4 Until such time as the property in the Equipment passes to the Buyer (and provided the Equipment is still in existence and has not been resold), the Seller shall be entitled at any time to require the Buyer to deliver up the Equipment to the Seller and, if the Buyer fails to do so forthwith, to enter upon any premises of the Buyer or any third party where the Equipment is stored and repossess the Equipment.

7.5 The Buyer shall not be entitled to pledge or in any way charge by way of security for any indebtedness any of the Equipment which remain the property of the Seller, but if the Buyer does so all moneys owing by the Buyer to the Seller shall (without prejudice to any other right or remedy of the Seller) forthwith become due and payable.

8. Warranties and Liability

8.1 Subject to the conditions set out below, the Seller warrants that the Equipment will be fully functional for its intended purpose at the time of delivery and for such period after delivery as is specified by the Seller at the time of sale.

8.2 This warranty is given by the Seller subject to the following conditions:

8.2.1 the Seller shall be under no liability in respect of any specification supplied by the Buyer:

8.2.2 the Seller shall be under no liability in respect of any defect arising from wilful damages, negligence, abnormal working conditions, failure to follow the Seller's instructions and recommendations (whether oral or in writing) or misuse of the Equipment.

8.2.3 the Seller shall be under no liability under the above warranty (or any other warranty, condition or guarantee) if the total price for the Equipment has not been paid by the due date for payment or the Buyer is in any other respect in material breach of any of these conditions:

8.2.4 the Equipment integrity seals must remain undisturbed and the Equipment must remain unmodified and no previous repair or attempted repair (other than by or with the Seller's written consent) must have been undertaken.

8.3 The Buyer must notify the Seller of any defect eligible for remedy under this warranty within 14 days of discovering the defect. If the Buyer does not notify the Seller accordingly, the Buyer shall not be entitled to reject the Equipment and the Seller shall have no liability for such defect or failure, and the Buyer shall be bound to pay the price as if the Equipment had been delivered in accordance with the Contract.

8.4 Where a valid warranty claim is made the relevant Equipment shall be returned to the Seller at the expense of the Buyer and shall be redelivered within the EU after rectification to the Buyer at the expense of the Seller:

8.5 Equipment the subject of warranty repair will carry in respect of the repair a warranty for a period of two months from the date of redelivery to the Buyer.

8.6 Where any valid claim in respect this warranty is made, the Seller shall be entitled to repair the Equipment, replace the Equipment (or the part in question) or, at the Seller's sole discretion, refund to the Buyer the price of the Equipment (or a proportionate part of the price), but the Seller shall have no further liability to the Buyer.

8.7 Except in respect of death or personal injury caused by the Seller's negligence, the Seller shall not be liable to the Buyer by reason of any representation (unless fraudulent), or any implied warranty, condition or other term, or any duty at common law, or under the express terms of the Contract, for any indirect, special or consequential loss or damage (whether for loss of profit or otherwise), costs, expenses or other claims for compensation whatsoever whether caused by the negligence of the Seller, its employees or agents otherwise which arise out of or in connection with the supply of the Equipment or its use or resale by the Buyer, and the entire liability of the Seller under or in connection with the Contract shall not exceed the price of the Equipment, except as expressly provided in these Conditions.

8.8 The Seller shall not be liable to the Buyer or be deemed to be in breach of the Contract by reason of any delay in performing, or any failure to perform, any of the Seller's obligations in relation to the Equipment if the delay or failure was due to any cause beyond the Seller's reasonable control.

9. Insolvency of Buyer

9.1 This clause applies if:

9.1.1 the Buyer makes any voluntary arrangement with its creditors or (being an individual or firm) becomes bankrupt or (being a company) becomes subject to an administration order or goes into liquidation (otherwise than for the purposes of amalgamation or reconstruction); or

9.1.2 an encumbrancer takes possession, or a receiver is appointed, of any of the property or assets of the Buyer: or

9.1.3 the Buyer ceases, or threatens to cease, to carry on business; or

9.1.4 the Seller reasonably apprehends that any of the events mentioned above is about to occur in relation to the Buyer and notifies the Buyer accordingly.

9.2 If this clause applies then without prejudice to any other right or remedy available to the Seller, the Seller shall be entitled to cancel the Contract or suspend any further deliveries under the Contract without any liability to the Buyer, and if the Equipment have been delivered but not paid for the price shall become immediately due and payable notwithstanding any previous agreement or arrangement to the contrary.

10. Export Terms

10.1 Where the Equipment is to be exported from Slovenia the Buyer shall be responsible for complying with any legislation or regulations governing the importation of the Equipment into the country of destination and for the payment of any duties on them.

11. General

11.1 No waiver by the Seller of any breach of the Contract by the Buyer shall be considered as a waiver of any subsequent breach of the same or any other provision.

11.2 The Contract shall be governed by the laws of Slovenia, and the Buyer agrees to submit to the exclusive jurisdiction of the Slovene courts.

SKORIĆ **ex. ŠJOR**
SPECIJALIZIRANA RASVJETA

PRODAJA-PROJEKTI-MONTAŽA

Adress: Kaštelanska bb, 21000 Split - Croatia

Tel/fax: 021/314-777, 314-778, 314-779

Gms: 091/953-61-72

Web: www.sjor-dekoracije-com